



MAYA MADDEN



MAYA MADDEN

LEFT: MAYA WORKING WITH THE JEWELRY TORCH IN HER STUDIO

Just the Facts!

Maya Madden - [No Rules Jewelry](#) - Dodgeville/Spring Green

Artist medium: Jewelry

Primary method of working:

In my studio, concentrating, not thinking about what I will make for dinner.

Favorite surface/technique treatment: Vitreous enamel

fired on Fine silver in either Cloisonne' or Champleve technique.

Equipment used: Saw, punch, torch, kiln, very fine brushes, tweezers and very sharp pointy scissors

Favorite tools: Handmade sable brushes

Studio playlist (music/podcasts): I listen to audio books or whatever my husband and studio mate is playing. Sometimes NPR if it is of interest.



NO RULES STUDIO DURING THE 2019 FALL ART TOUR



IN THE STUDIO: WORK DESK



MAYA MADDEN & WAYNE FARRA IN THEIR STUDIO

Artist Conversation!

Let's Learn a Little More...

Tell us a little bit about yourself and how you came to be living life the way you are today?

I have supported myself through my work for 27 years. It innocently began, when I returned from living on a sail boat, and acquired some beads

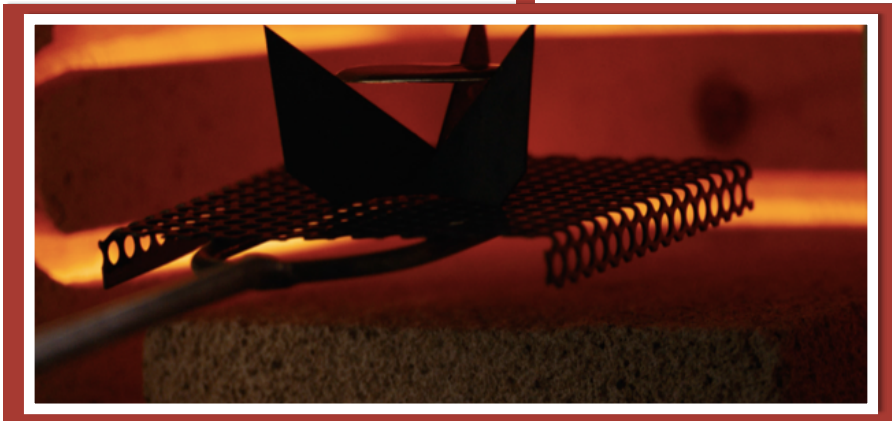
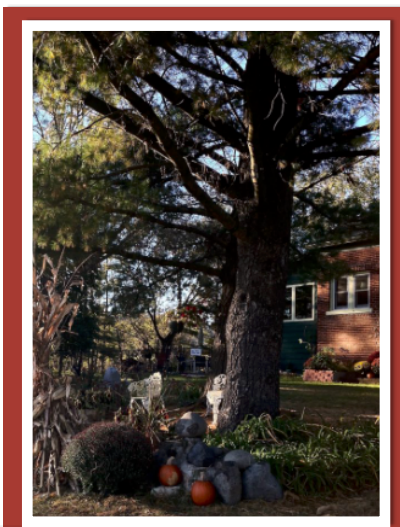
I went to scrap yards and got all kinds of metal junk and I began to combine things with beads, feathers, string etc. I had a tack hammer and an electric drill. Then, I met Wayne Farra.

He was an established art jeweler using precious metals and gems, plastic, and Corian. We fell in love, got married. He had the best tools. We combined our businesses and have been making jewelry ever since.

RIGHT: NO RULES STUDIO DURING THE 2019 FALL ART TOUR

How do you keep things fresh and your mind engaged?

I didn't start my artist career until my sons were grown, so I have the freedom to pursue my art. Since my studio is in the lower level of my home, I have to sometimes put blinders on when I walk through the living area so I can ignore what needs to be dusted or cleaned or cooked.



UP CLOSE PHOTO: INSIDE THE KILN WHILE BEING FIRED



ENAMELED EARRINGS



CLOISSONNE EARRINGS & MATCHING NECKLACE



TREE PENDANT NECKLACE



ENAMELED HEART NECKLACE

RIGHT: MAYA WORKING WITH
A SAW TO MAKE HER
UNIQUE JEWELRY PIECES.



INTRICATE WING
PENDANT NECKLACE



BUTTERFLY WING
PENDANT NECKLACE



RILEY THE DOG LOOKING
IN THE STUDIO WINDOW

Tell us a little bit about your Studio!

When my husband and partner in No Rules Jewelry were looking for a space to live and work, we saw an ad for a schoolhouse. We bought it the same day. Our studio, located in the lower level was quite rustic. There were crumbling walls, uneven floors, little heat and small windows. After 2 years, we poured a new cement floor, enlarged the windows, put in better light and insulated the walls. It's a large space. We always think we could use more. Doesn't every artist? We have lots of jewelry making equipment including rolling mill, torches, kilns, and casting equipment.

Where do you find your inspiration?

I am inspired by natural forms, particularly leaves but I never know when some idea or vision will appear in my brain. I never really have to think about it too much. Sometimes learning a new technique will inform a design, sometimes seeing a painting or design will birth something different. It doesn't always mean that what I envision is what comes to fruition. Many failures, much experimentation.

Where can we find your work and learn more?

I reluctantly try to market my work on [Facebook](#) and my [website](#). Not my favorite thing, but I need to sell what I make. Until Covid, I sold my work at Art Fairs all over the country. I also owned a gallery in Spring Green for 10 years and still sell there and at other galleries. I use direct mail and email to reach customers are loyal followers of No Rules Jewelry. The Fall Art Tour has been a great way to meet people who visit our studio. I shall miss the experience in 2020 but look forward to 2021!