



MARLYS GREENHALGH



MARLYS GREENHALGH

LEFT: PAINTING PLEIN AIR IN THE BRIGHT SUMMER SUNSHINE

Just the Facts!

Marlys Greenhalgh - [Prickly Pear Studio](#) - Baraboo

Artist medium:

Oil Painter & Woodcut Printmaker

Primary method of working:

Plein Air and Studio Direct
Observation

Favorite surface/technique

treatment:

Linen Canvas for Oil
Painting and Stonehenge Paper for
Printmaking

Equipment used:

Backpack French Easel for
Painting/Press for Printmaking

Favorite tools:

Relief Carving Tools/ Utrecht
Tuscan Series Brushes

Studio playlist:

Sirius FM Radio stations
Watercolors and Tom Petty's
"Buried Treasure Show"



SPRINGTIME PINK TREES



IN THE GARDEN



ESSENTIAL SUN SHADE WHILE WORKING IN THE SUMMER

Artist Conversation!

Let's Learn a Little More...

Tell us a little bit about yourself and how you came to be living life the you are today?

I am a graduate of The Pennsylvania State University with a B.S. in Art Education, I retired after teaching Fine and Graphic Arts for many years first in PA, then in CA, and for 20 years at Baraboo High School. I have done my own art throughout my life, and now after retiring and raising our family can devote myself to my art full time.

How do you keep things fresh and your mind engaged?

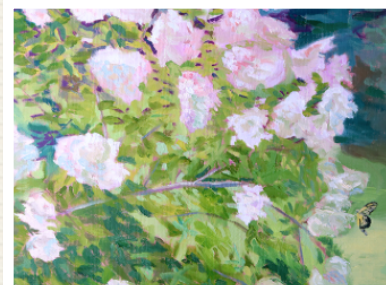
Our four sons are now grown, with our youngest recently graduating from UW Madison! We are thrilled to have a granddaughter now! Family members often show up in my work. Love and companionship promotes my happiness and productivity. I stay physically active throughout the year by walking, biking, swimming, hiking, skiing, doing yoga, kayaking and gardening! I love to travel, cook, read, entertain, and sit by our stone fireplace.



PLEIN AIR PAINTING



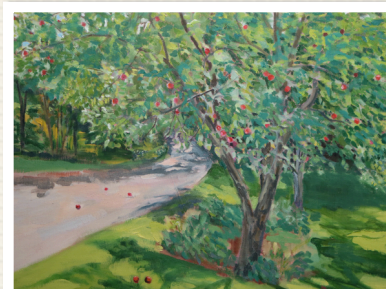
SUMMER SUNFLOWERS



FLOWERS WITH BUTTERFLY



DEVIL'S LAKE



APPLE TREE HARVEST



DEVIL'S LAKE



LOON FAMILY



ALDERWOOD SUNSET



LOON TAKING OFF



BARRED OWL



Tell us a little bit about your Studio:

Prickly Pear Studio is located adjacent to our home in the beautiful Baraboo Hills. We have lived here for 25 years and I find inspiration daily from my perennial gardens, rural vistas and the surrounding roads and hills.

Where do you find your inspiration:

Inspiration is vital for art to flourish, mine includes landscapes, flora, fauna and figures often observed and painted 'en plein air'. My perennial gardens are a source of inspiration. I collect cacti, banana

trees, jade and other plants that inspire. Travel to places near and far contributes to my story. We often visit The Art Institute of Chicago and The Milwaukee Art Museum as well as other collections when we travel to enjoy special exhibitions and permanent collections.

Where can we find your work and learn more?

I utilize my graphic art and photography skills to promote sales of my paintings and prints.

I'm on social media. Find Prickly Pear Art Studio on [facebook](#) and [instagram](#).

Prickly Pear Art Studio also has a website:

pricklypearstudio.net

I have organized numerous group and solo exhibitions of my artwork. Additionally, I have compiled an email contact list and send recent work updates with a sales link for purchasing my art. I am a member of the Sauk County Art Association, and Wisconsin Visual Artists Association.